



Aircraft Door Barrier Nets BOEING 737



Aircraft Door Barrier Safety nets Boeing 737

- Open Doors on parked airplanes can be potential safety hazards for airline or maintenance personnel unaware of the opening.
- For the Boeing 737 there are two Aircraft Door Barrier Nets, one fits to the Forward Entry Door Part no. 511CA29. The other Part no. 512CA29 fits to the Forward Service Door, Aft Entry Door, and Aft Service Door. See **Figure 1** for door identification and location.
- These should be fitted to the aircraft whilst maintenance work is being carried-out in the Aircraft Hangers or on the runway.
- No tools are required to fit these door nets, so they can be quickly fitted without any delay. (See instruction manual for Installation details)
- The purpose of the door net is to provide a visual safety measure, to alert the personnel working inside of the aircraft that care should be taken when working in close proximity to door openings.
- The aircraft door barrier net is fitted to 4 off aircraft door brackets located around each aircraft door frame. Shown in **Figure 2**
- Can be used when the doors are left open to cool the aircraft in high temperatures. Negates the requirement of the air-conditioning, which is both a cheaper and a greener solution.

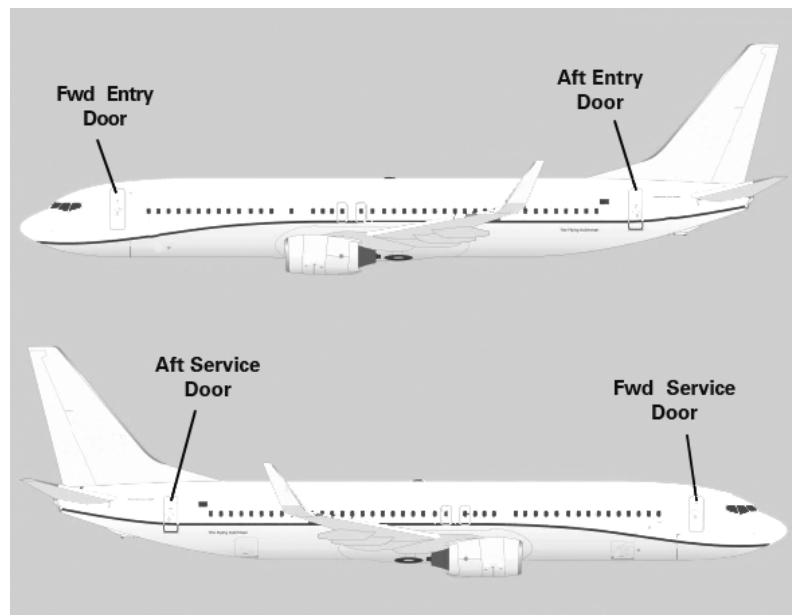
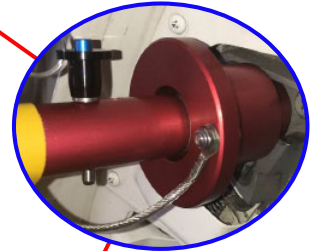


Figure 1

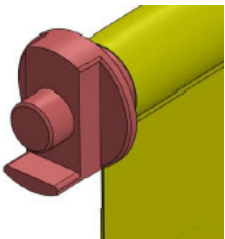


Fixed Top Locator

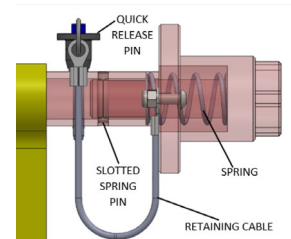
Top Quick
Release Pin



Top Sprung
Loaded Locator



Profile Locates
inside the door
bracket.

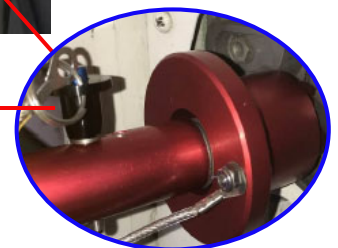


With the locking pin
fitted, the locators
cannot be removed
from the door brackets



Fixed Bottom Locator

Bottom Quick
Release Pin



Bottom Sprung Loaded
Locator

Figure 2

If you have a requirement for a different aircraft type, please contact us for more information. For new projects, access to aircraft would be a requirement to allow for design work and trials.