

# VLF-34E 34 kV VLF Tester

## Very Low Frequency AC Technology

VLF & DC Output • Sheath Testing • Cable Burning

The VLF-34E is a new generation VLF AC hipot that uses a solid state design with microprocessor controls. It meets the requirements of applicable world standards regarding cable testing up to 25kV class Maintenance testing. It is light, compact, rugged, and very portable. Its sine wave output is suitable for using optional external PD and TD detection equipment. Using a TD and PD option, the VLF-34E is all that is needed for nearly all cable testing up to 25kV class.

### Specifications – Solid State Design

Input Voltage:	90 Vac – 265 Vac, 50 Hz/60Hz, 5A max.
HV Output:	0-34 kVac peak/0-24 kVac rms - Sinusoidal DC: +/- 34 kV Square wave: 34 kV Sheath Tester
Duty:	Continuous
Frequency:	0.1 Hz to 0.01 Hz
Load Rating:	0.5 µF @ 0.1 Hz @ 34 kV 1.0 µF @ 0.05 Hz @ 34 kV 5.0 µF @ 0.01 Hz @ 34 kV µF rating increases at lower voltages Ex: 0.77 µF @ 0.1 Hz @ 22 kV peak
Metering:	Voltage kV peak or RMS Current mA peak or RMS
Calculated:	Capacitance, Resistance, Flashover voltage, Time to Failure
Size/Weight:	19.7" x 12.0" x 18", 45 lbs. 500mm x 305mm 458mm, 21 kg.
Case:	Hard "Pelican" type case with extendable handle and wheels
Lead Outputs:	HV lead: 20' RG8/U, Ground 20' #2
Fault:	Smart Fault Management or shutdown on Fault
Reports:	Test Records stored in non-volatile memory or via USB memory stick
PC Interface:	USB, XBees® wireless, RS-232/422
PC Software:	Remote Control & Test Reports

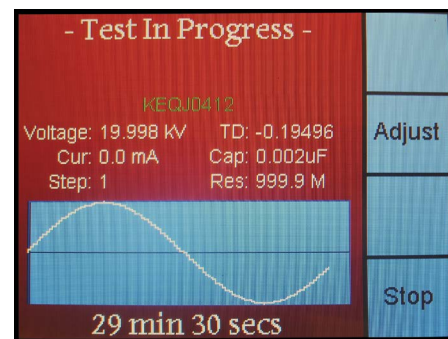
Optional Tan Delta and Partial Discharge diagnostic equipment available.

ISO 9001:2008



**Easy to use controls.** Programmable test sequences & manual control, USB port for downloading data and for unlimited test report capture, wireless computer interface to control and download optional Tan Delta diagnostics and for remote control operation via laptop.

**Cable Standards met:** IEEE 400.2-2013, IEEE 400-2001, IEEE 433-2009, IEC 60060-3 VDE DIN 0276-620/621, CENELEC HD 620/621



HIGH VOLTAGE, INC.

31 County Rt. 7A, Copake, NY 12516 • (518) 329-3275 • Fax: (518) 329-3271  
E-Mail: sales@hvinc.com • Web: www.hvinc.com

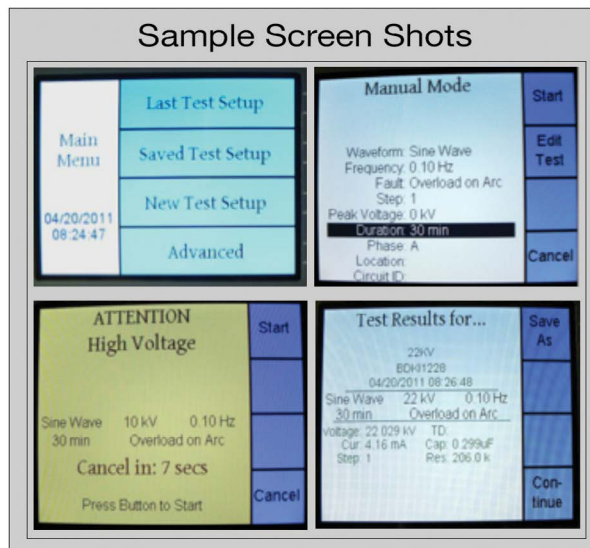
High Voltage, Inc. designs and manufactures high voltage test equipment for utility and industrial applications. Also available are Very Low Frequency (VLF) high voltage AC test sets, oil dielectric test sets, AC and DC instrumented test sets, cable fault locators and other products.

# VLF-34E 34 kV VLF Tester

## Very Low Frequency AC Technology

### Additional Specifications

<b>Voltage Measurement</b>	Range:	0.1 kV - 34 kV peak/0.1 - 25 kV rms
	Accuracy & Resolution:	1% & 0.1 kV peak
<b>Current Measurement</b>	Range:	0 - 15 mA rms
	Accuracy & Resolution:	1% & 1 $\mu$ A
<b>Capacitance Measurement</b>	Resolution:	0.001 $\mu$ F
	Accuracy: load current below 50 $\mu$ A:	No display
	load current 50 $\mu$ A & 0.5 mA:	Greater of 10% or 0.01 $\mu$ F
	load current above 0.5 mA:	Greater of 5% or 0.01 $\mu$ F
<b>Resistance Measurement</b>	Resolution:	0.1 M $\Omega$
	Accuracy: load current below 50 $\mu$ A:	No display
	load current 50 $\mu$ A & 0.5 mA:	Greater of 10% or 5 M $\Omega$
	load current above 0.5 mA:	Greater of 5% or 1 M $\Omega$
<b>Temperature Ranges</b>	Operating:	20°F to 120°F, -7°C to 50°C
	Storage:	-10°F to 150°F, -23°C to 66°C
	Humidity:	80% up to 90°F, 32°C



### Tangent Delta Measurement & Partial Discharge Detection for all models Models TD-34E & TD-65E: Wireless to VLF & to custom PC Application



#### VLF Tests Performed

- VLF AC Withstand
- VLF Tan Delta ( $\delta$ )
- VLF Partial Discharge

All HVI VLF products deliver the above cable tests and others per **IEEE 400.2**. Also use the VLF-34E for testing motors & generators per **IEEE 433**.

Download the brochures for the TD-34E, VLF-65E, TD-65E, and for all VLF models and other products from [www.hvinc.com](http://www.hvinc.com).

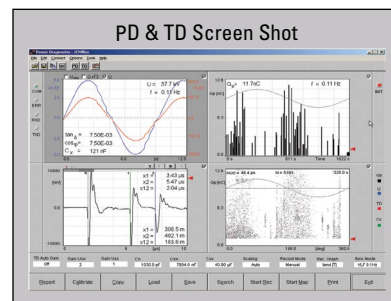
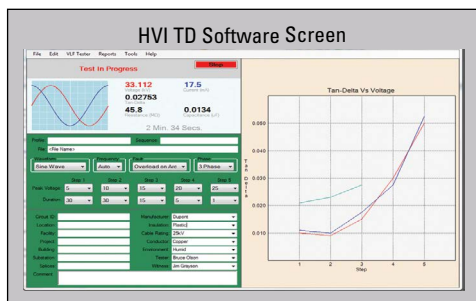


#### Model VLF-65E

0 - 65 kVac pk @ 1.0 uF @ 0.10 Hz

### Ideal for Wind Farms

VLF Withstand  
VLF Tan Delta  
VLF Partial Discharge



**HVI: The World's VLF Source**  
All HVI Products are **Made in the USA**

**ISO 9001:2008**



**HIGH VOLTAGE, INC.**

31 County Rt. 7A, Copake, NY 12516 • (518) 329-3275 • Fax: (518) 329-3271  
E-Mail: [sales@hvinc.com](mailto:sales@hvinc.com) • Web: [www.hvinc.com](http://www.hvinc.com)

High Voltage, Inc. designs and manufactures high voltage test equipment for utility and industrial applications. Also available are Very Low Frequency (VLF) high voltage AC test sets, oil dielectric test sets, AC and DC instrumented test sets, cable fault locators and other products.